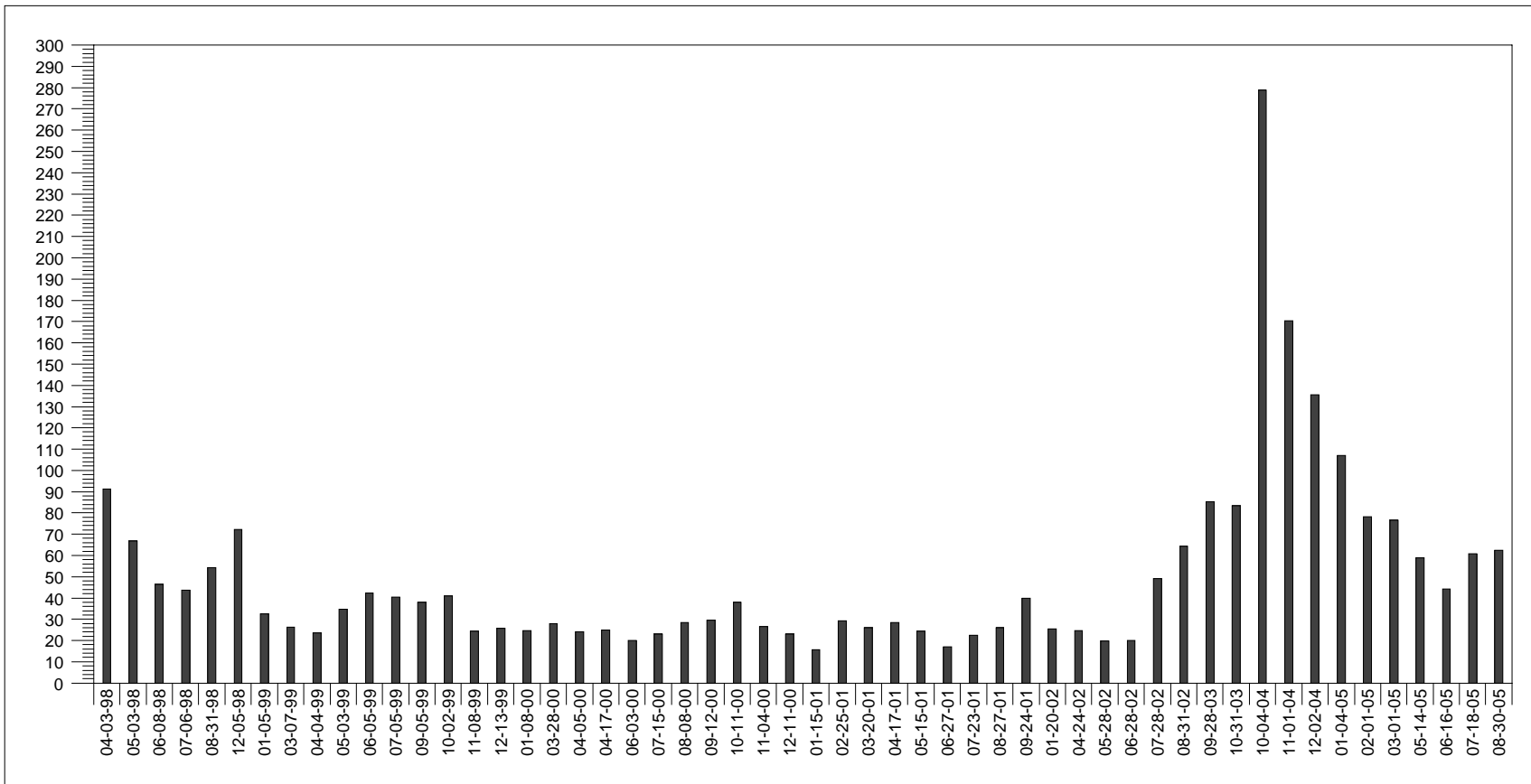


FLORIDA LAKEWATCH

Little Wilson / Hillsborough County

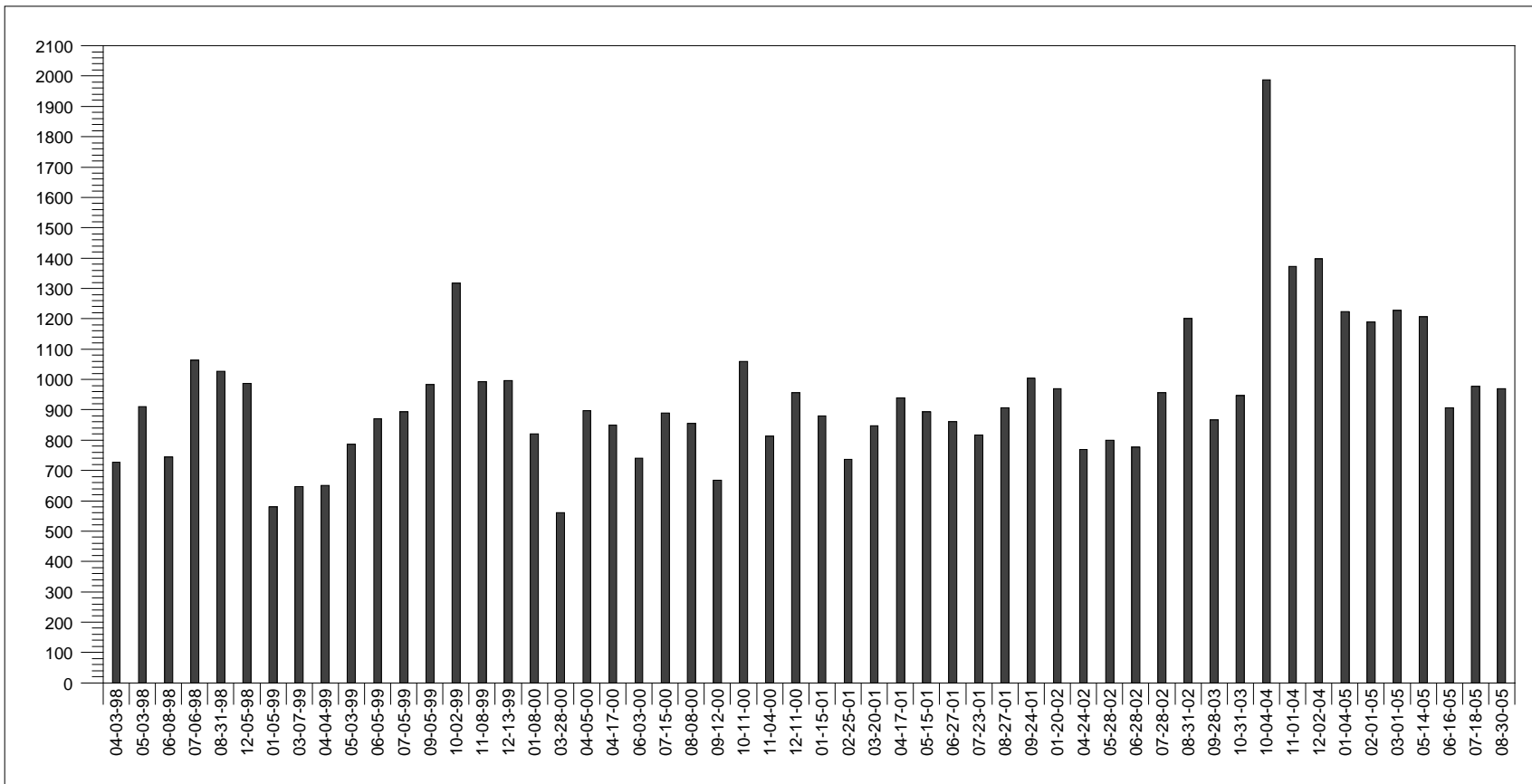
Total Phosphorus ($\mu\text{g/L}$) : Oligotrophic (< 15) Mesotrophic (15-25) Eutrophic (25-100) Hypereutrophic (> 100)



FLORIDA LAKEWATCH

Little Wilson / Hillsborough County

Total Nitrogen ($\mu\text{g/L}$) : Oligotrophic (< 400) Mesotrophic (400-600) Eutrophic (600-1500) Hypereutrophic (> 1500)



Report Date

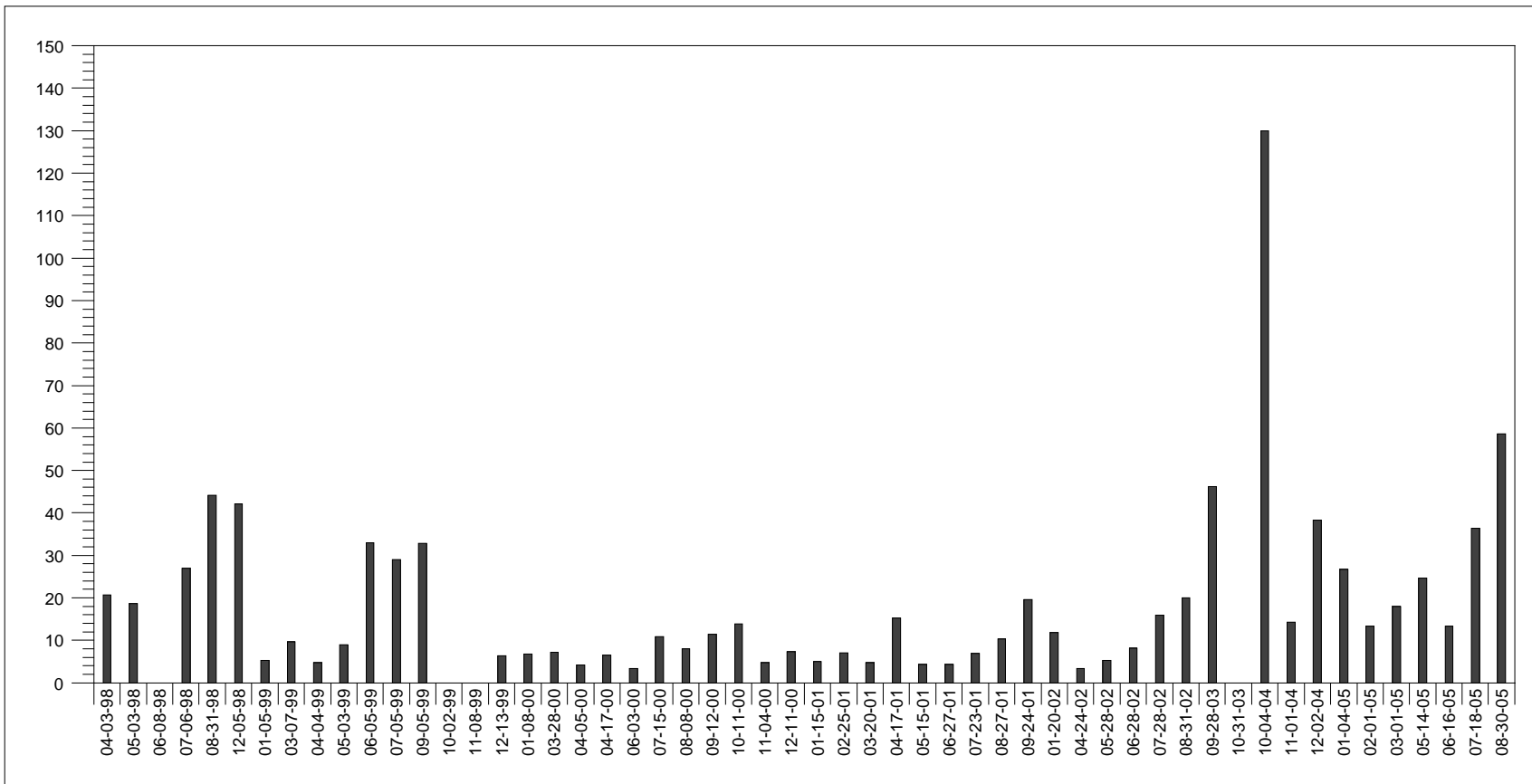
Apr-07

Page 2

FLORIDA LAKEWATCH

Little Wilson / Hillsborough County

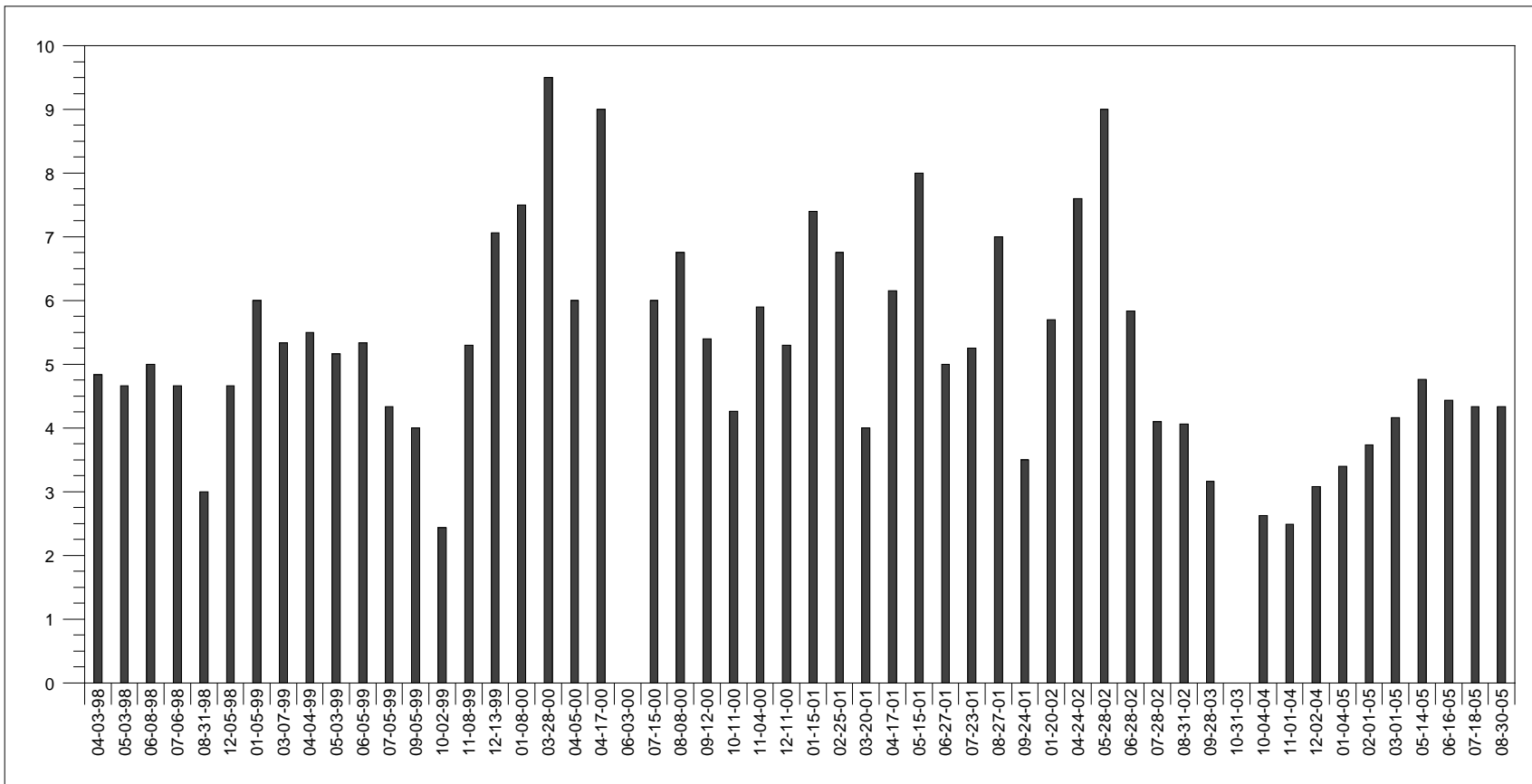
Chlorophyll (µg/L) : Oligotrophic (< 3) Mesotrophic (3-7) Eutrophic (7-40) Hypereutrophic (> 40)



FLORIDA LAKEWATCH

Little Wilson / Hillsborough County

Secchi Depth (ft) : Oligotrophic (>13.1) Mesotrophic (8.2-13.1) Eutrophic (3.2-8.2) Hypereutrophic (< 3.2)



Report Date

Apr-07

Page 4